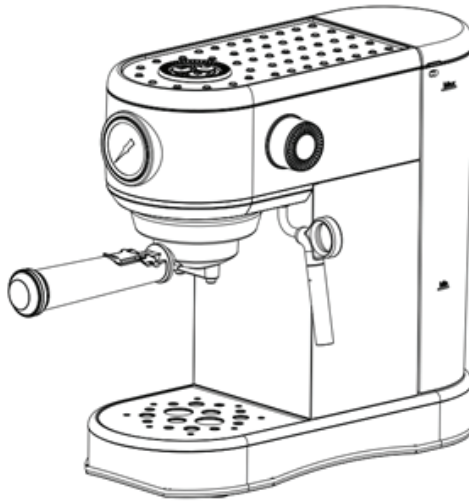


alcom®



ESPRESSO COFFEE MACHINE MODEL: ST-697B

Instruction Manual

Attention:

This appliance is not intended for use by persons (including Children) with reduced physical, sensory or mental capabilities or lack of experience and knowledge unless they have been given supervision or instruction concerning use of the appliance by a person responsible for their safety. Children should be supervised to ensure that they do not play with the appliance.

Congratulation on your purchase!

Acorn Espresso Coffee Machine is manufactured with the greatest care. If you look it after properly it will reward you with many years of good service. Before using your new machine, please read this operating manual carefully, paying particular attention to the safety precautions.

CONTENTS:

1. Safety Precaution	page 2 & 3
2. Notes On This Operating Manual	page 4
3. Unpacking	page 4
4. Component Description	page 5
5. Functions Description	page 5
6. Operation & Use	page 6
7. Brewing Coffee	page 7
8. Frothing / Steaming Milk	page 8
9. Hot Water	page 9
10. Paper Coffee Pod	page 9
11. Energy Saving Setting	page 10
12. Descaling The Machine	page 10
13. Brew Extraction Time Setting	page 11
14. Restore Factory Setting	page 11
15. Cleaning & Maintaining	page 12
16. Troubleshooting	page 13
17. Product Warranty	page 14

SAFETY PRECAUTION:

Please read these safety precautions carefully before connecting your machine to the power supply. It is essential to follow them and the operating instructions.

1. First read through this entire operation manual.
2. Connect only to a properly grounded power point.
3. Make sure the machine is switched off before remove the power plug from the power point.
4. If you need an extension cable, only use the approved extension cord.
5. Do not clamp or run the power cable over sharp corner or edges.
6. Danger of electric shock:
 - i) Do not immerse the machine in water or any other liquid.
 - ii) Never touch the power plug/socket/cable or the machine with damp or wet hands.
 - iii) Damaged power cable may only be replaced at the customer service center.
7. Always remove the power plug when:
 - i) Relocating the machine
 - ii) Cleaning or maintenance
 - iii) Long periods of disuse
8. Danger of scalding:
 - i) Do not move the machine during operation.
 - ii) Do not touch the frothing wand or sleeve.
 - iii) Do not change the operating Control Knob when the machine is still under pressure making coffee.
9. Do not operate the machine without water. Make sure the water level in the water tank not less than minimum level.
10. Danger of burning! Do not touch the machine brewing parts during operation.

SAFETY PRECAUTION:

11. Do not use the machine, when:
 - i) Faulty operation.
 - ii) Damaged power cable.
 - iii) Dropped or other damages.
(Send in the machine to customer service center for check and repair)
12. Use the machine at the location which meet the following conditions:
 - i) Choose a dry and stable support surface, avoid directly underneath the power point.
 - ii) Place the machine at least 60cm away from washbasin and taps.
 - iii) Do not place the machine or power cable on or nearer than 50cm to hot surfaces or open flames, flammable/fusible surfaces or equipment.
 - iv) Do not cover the machine during operation.
13. Keep children away from the machine during operation.
14. Danger of tripping! Do not let the power cable hang down.
15. This machine is only intended for household use.
16. Remove the power plug and allow the machine to cool down completely before cleaning and or maintenance.
17. To prevent damage, do not use replacements parts or accessories not recommended by the manufacturer.
18. This appliance can be used by children aged 13 and above if they have been given supervision or instruction concerning use of the appliance in a safe way and if they understand the hazards involved. Cleaning and user maintenance shall not be made by children unless they are aged 13 and above and supervised.

WARNING

**THIS APPLIANCE IS FOR HOUSEHOLD AND INDOOR USE ONLY.
THERE IS POTENTIAL INJURY FROM MISUSE. HEATING
ELEMENT SURFACE IS SUBJECT TO RESIDUAL HEAT AFTER USE.**

NOTES ON THIS OPERATING MANUAL:

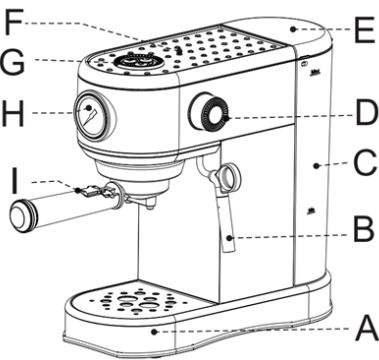
This operating manual cannot cover all possible circumstances. For further information or in the event of problems not adequately covered in this operating manual, please contact the customer service center.

Please keep this operating manual safe and pass it on to the next user.

UNPACKING:

1. Remove your espresso coffee machine from its packaging.
2. After unpacking, please check that the following parts are included:
 - i) Water tank
 - ii) Coffee Machine
 - iii) Instruction Manual
3. Check and ensure that your home power supply voltage is the same as marked on the machine rating label.
4. Discard all the plastic wrapper to prevent danger to children.
5. Keep the packaging for transporting the machine (e.g. for servicing or disposal).
6. You may find a little water remaining in the machine.

COMPONENT DESCRIPTION:



Component Description	
A	Drip Tray
B	Frothing Wand
C	Water Tank
D	Control Knob
E	Water Tank Lid
F	Warming Plate
G	Switch Button
H	Pressure Gauge
I	Portafilter

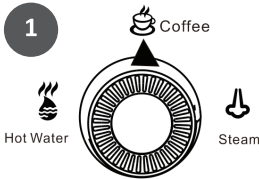
FUNCTIONS DESCRIPTION:


Functions Description					
Switch Button			Control Knob		
	ON/OFF Button	Turn ON or switch OFF the machine		Coffee Function Gear	Turn here when making coffee
	Single Cup Function Key	Press the single cup button, the light flickers slowly, the machine starts brewing coffee, and the machine stops automatically after brewing		Steam Function Gear	Turn here when making steam
	Hot Water Indicator	The lamp flashes quickly when making hot water		Hot Water Function Gear	Turn here when making hot water
	Double Cup Function Key	Press the double cup button, the light flickers slowly, the machine starts brewing coffee, and the machine stops automatically after brewing			
	Steam Indicator	The lamp flashes rapidly when steam is made			

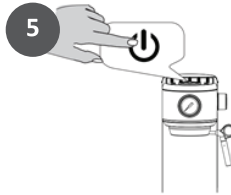
OPERATION & USE:



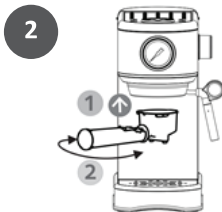
The machine must be washed if it is used for the first time or not used for a long time. At least 100 ml hot water should be washed with frothing wand, and then one cup of hot water should be washed in the portafilter. The specific washing methods are as follows:



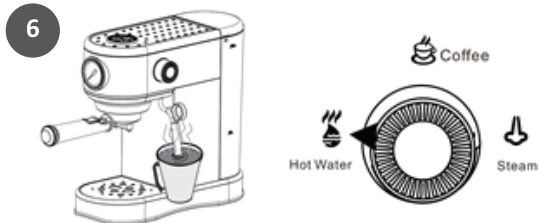
Before starting the machine, the Control Knob must be turned to this position.  Coffee



Press to turn ON the machine, each function indicator flashes and the machine is warming up. All indicators lights up after preheating.



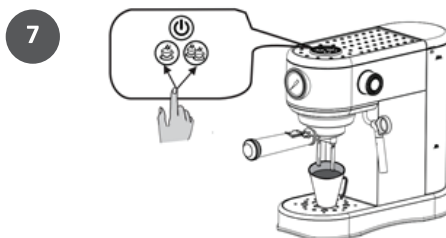
Insert the Portafilter to the brew head, turn to the right until locked.



Frothing Wand flushing: Place a cup (capacity>100ml) under the frothing wand. Turn the Control Knob to 'Hot Water' position, the frothing wand starts making hot water until it is 100ml. (Note: make hot water continuously for 120 sec.)

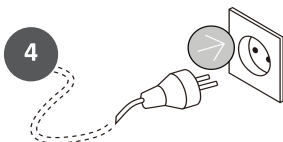


Lift the water tank lid, add 1 liter of water to the tank.



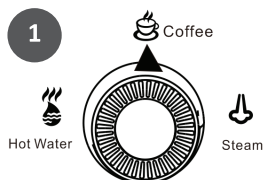
Portafilter flushing: Place a cup (capacity >100ml) above the drip tray. Press the Single or Double Cup button and wait for the machine to finish flushing (make sure there is more than 150ml of water in the Water Tank)


(Precaution: before press the button, make sure the Portafilter has been attached onto the machine)

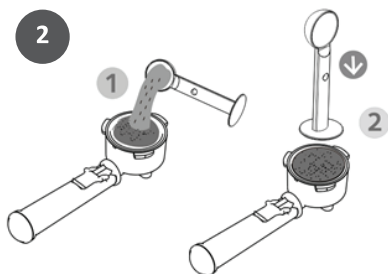


Connect to the power supply.

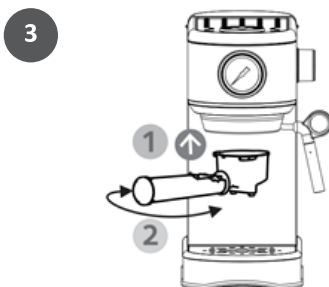
BREWING COFFEE:



Make sure the Control Knob is turned to this position 

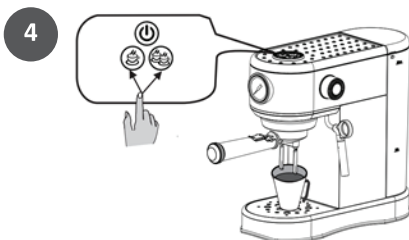


Select from the two sieves that come with your machine depending on the amount of cups you wish to prepare (1 or 2 cups). Place the sieve in the Portafilter and ensure it sits level. Fill the selected sieve with fresh and finely ground coffee. Clean any excess coffee from the rim of the Portafilter. This will assure proper fit under the brew head. Tamp or compress coffee using the flat side of the coffee scoop. Do not overfill the sieve, as this might cause logging or overflow.



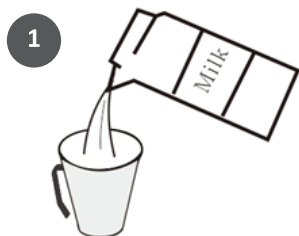
Position the Portafilter underneath the brew head, align and push the Portafilter up. Turn the Portafilter to the right until locked.

(note: the Portafilter should form right angle 90° against the machine)

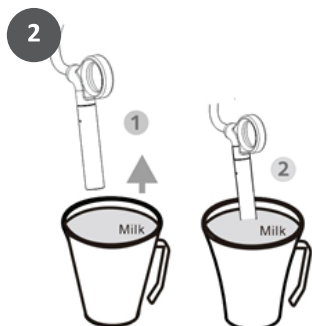


After you prepare the machine and ground coffee as described in the previous sections you are ready to start brewing your coffee. Place 1 or 2 small cups above the Drip Tray (make sure there is more than 150ml water in the Water Tank). Press the Single Cup or Double Cup button, the indicator light will flashed for few seconds while the machine is heated to the proper temperature before brewing. The pump is audible for a short moment as the grounds are preinfused with water. Then, after a short pause, the coffee will begin to flow into the cup(s).

FROTHING / STEAMING MILK:



Pour some fresh milk into the cup.
(no less than 50ml)

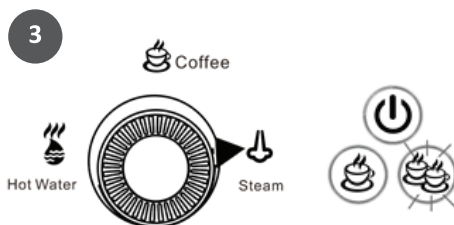


To froth/steam milk, submerge the Frothing Wand about 2/3 into the milk, make sure the Frothing Wand does not hit the bottom of the cup during frothing.

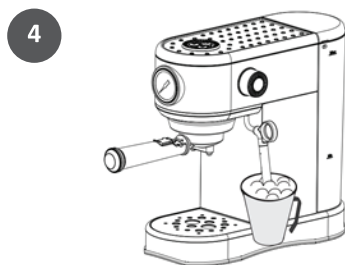



To avoid splattering of hot milk, do not let the opening of the Frothing

Wand go above the surface of the milk. Keep the Frothing Wand submerged in the milk during the entire frothing process. Carefully clean the Frothing Wand with a wet cloth immediately after steaming to avoid milk build up. Take care to avoid contact with hot parts.



With the Frothing Wand submerge into the milk, turn the Control Knob to the right pointing the position 'Steam'. The Steam indicator will flash rapidly and the machine is in steam mode. Steam will start to exit the Frothing Wand releasing hot steam into the milk. During frothing, the machine's pump will generate intermittent noise indicating that water is being pumped through the heating system to be converted into steam.



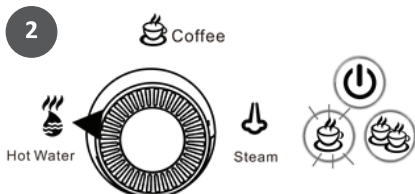
When the milk has doubled in volume, or the milk has reached 165°F/68°C (measured with beverage thermometer), turn the Control Knob back to this position  **Coffee**

Safety precaution: The machine will stop frothing/steaming after 120 seconds of continuous process. Turn the Control Knob back to the 'Coffee' position and then turn to the 'Steam' position to start froth/steam again.

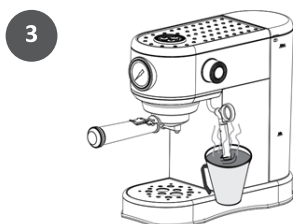
HOT WATER:



Place a cup into the Frothing Wand.



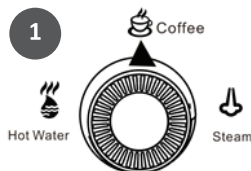
Turn the Control Knob to the left pointing the position 'Hot Water'. The Hot Water indicator will flash rapidly and the machine is in hot water mode, hot water will start to disperse from the Frothing Wand.



When the hot water level reached, turn the Control Knob back to the 'Coffee' position. *(Make sure there is more than 150ml of water in the Water Tank).*

Safety precaution: The machine will stop dispersing hot water after continuously for 120 seconds. Turn the Control Knob back to the 'Coffee' position and then turn to the 'Hot Water' position to start making hot water again.

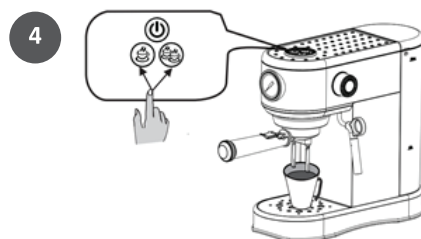
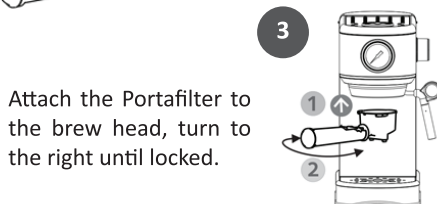
PAPER COFFEE POD:



Make sure the Control Knob is pointing to the 'Coffee' position.



Place a paper coffee pod into the cup sieve, then attached the cup sieve onto the Portafilter.



Place 1 or 2 small cups above the Drip Tray (make sure there is more than 150ml water in the Water Tank). Press the Single Cup or Double Cup button, the indicator light will flashed for few seconds while the machine is heated to the proper temperature before brewing. The pump is audible for a short moment as the grounds are preinfused with water. Then, after a short pause, the coffee will begin to flow into the cup(s).

ENERGY SAVING SETTING:



>15 minutes

The machine comes with energy saving mode. The machine will turn off automatically after 15 mins, all functions will be disabled. To turn on the machine, press the ON/OFF button.



Energy Saving Mode Setting:

Connect the machine to the power supply, press and hold the 'Single Cup' and 'Double Cups' button together until the ON/OFF button lights up.



Deactivate: Press the 'Single Cup' button, the light will go off. The energy saving mode will be disabled.

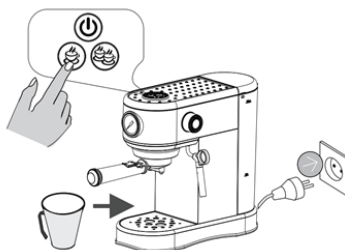
Activate: Press the 'Single Cup' button again, the light will be up. The energy saving mode is enabled.

DESCALING THE MACHINE:



Descaling your machine on a regular basis is important to maintain the quality of espresso you produce and helping to extend the life of the machine. You should be descaling your machine at least 3 times a year to avoid the unwanted build-up of scale, coffee residue and harmful bacterial.

1. Place a cup underneath the Brewer .
2. Prepare and pour your preferred descaling solution into the Water Tank.
3. Press and hold the Single Cup button, at the same time turn on the power supply.
4. Release the button and wait for the ON/OFF button and Single Cup button to be illuminated. Then press the Single Cup button to start the descaling process. The machine will run about 120 seconds. Press the Single Cup button to stop the process at anytime needed.



BREW EXTRACTION TIME SETTING:

The machine preset with default factory brew extraction time. Simply follow the below settings to change the extraction time when needed.



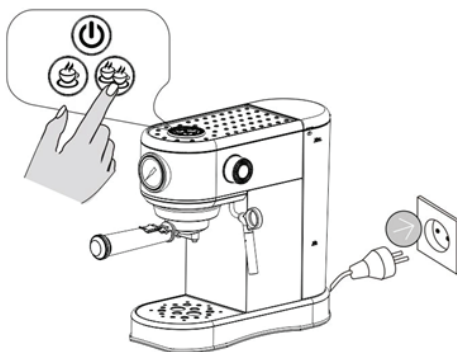
Single cup extraction time setting: Place a cup underneath the brewer. In standby mode, press and hold the Single Cup button. When the machine starts to brew till the coffee dropping from the portafilter, release the button. Single cup extraction time setting completed (minimum 10 secs, maximum 90 secs)



Double cup extraction time setting: Place a cup underneath the brewer. In standby mode, press and hold the Double Cup button. When the machine starts to brew till the coffee dropping from the portafilter, release the button. Double cup extraction time setting completed (minimum 10 secs, maximum 90 secs)

RESTORE FACTORY SETTING:

Press and hold the Double Cup button. Connect the machine to the power supply and turn ON. The ON/OFF button will flashed twice and the machine is restored to factory settings.



CLEANING & MAINTAINING:



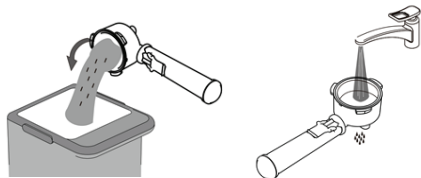
Do not immerse the machine in water, in any other liquid or place in the dishwasher. Before cleaning, make sure the machine is turned off and unplug the cord from the power supply. Never use abrasive cleansers, sharp objects, steel wool pads or other abrasive materials to clean the machine.

1



Use cloth to clean. Do not pour water directly on the machine. The Water Tank and Drip Tray can be washed in a solution of hot water and mild liquid soap.

2

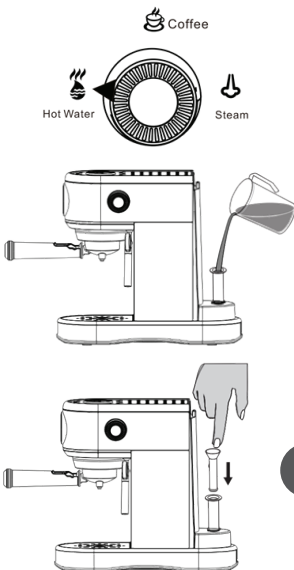


Discard the coffee waste properly, wash the sieves and portafilter in a solution of hot water and mild liquid soap.

3



Remove and wash the frothing wand, sleeve and tip. Use the cleaning needle to clear any milk clogged. Wipe the frothing wand with damp cloth.



4

CAUTION: The frothing wand may be VERY HOT! To avoid potential injury, always make sure that all parts have cooled down completely before handling

Clearing Air Locked: Position the Control Knob to the 'Hot Water'. Remove the Water Tank, insert the Air Pump into the water inlet and add appropriate amount of water, pump water into the machine with the Air Bar.

TROUBLESHOOTING:

Problem, possible causes and remedies.

Problem	Possible causes	Remedy
Espresso brew too quickly	Ground coffee is too coarse.	Choose the right coffee grounds especial y for espresso machine use.
	Not enough or too little coffee in the sieve.	Put more ground coffee.
Very little or no espresso flows through the Portafilter	No water in the Water Tank.	Fill the Water Tank with water.
	The brew head screen is blocked.	Brew water through the screen without the portafilter inserted.
	The sieve is blocked.	Clean the sieve, insert into the portafilter and run under water tap without coffee. If no water comes through the sieve call Customer Service to order a replacement sieve.
	Coffee grounds are too fine or tamped too firm.	Do not tamp coffee grounds too firmly. Choose the right coffee grounds.
Water leakage or espresso flows down from the side of the Portafilter	Water Tank leaks	Check whether the water tank is installed properly or damaged.
	Portafilter is not properly inserted	Turn the handle of the Portafilter further to the right until it's locked.
	Edge of sieve with coffee grounds.	Turn off the machine and remove the portafilter to clean the edges of the sieve.
No steam from the Frothing Wand.	Frothing wand is blocked.	See page 6 - step 6 "Frothing Wand flushing" and page 12 - step 3 of "Cleaning & Maintaining". Follow the instructions to clean and wash the frothing wand, sleeve and pipe correctly. If the appliance is still blocked, call Customer Service

PRODUCT WARRANTY:

LIMITED WARRANTY CARD

WC NO: SG000002

ACORN MARKETING & SERVICES PTE LTD

512 Chai Chee Lane #02-09/08/07 Singapore 469028

Tel: 65-6445 6144 Whatsapp: 8363 5474 Email: support@acornceilingfan.com

PURCHASE DATE: _____

MODEL NO: ST-697B

NAME: _____

SERIAL NO:

ADDRESS: _____

AUTHORIZED RESELLER:

CONTACT NO: _____

Acorn Espresso Coffee Machine comes with **One-Year Carry-In warranty** should the product breaks down prove to be defective by reason of faulty in material, its our responsibility to repair, at our option, replace the defective parts on condition that:

1. The warranty is valid in Singapore only for period of one year from the date of original purchase and would be voided if found to be incomplete, altered or defaced. Applicable for carry-in service only.
2. This warranty card along with proof of purchase are required to be presented to our Customer Service Centre when claiming the warranty.
3. Any application under this warranty is limited to the repairing or replacement of any parts of the machine, which proves to be defective within warranty period. **EXCLUSIONS FROM STANDARD WARRANTY:**
 - a) Damage due to accidents, misuse, mishandling, abuse, alteration, tampering, normal wear & tear or use any other that in accordance to instructions provided.
 - b) Damage due to wrong voltage applied.
 - c) Any scratches, dents, cracks, stain, corrosion and deterioration.
 - d) Unauthorized repairs by others
4. External connection, parts or installation and defects caused by others or wear and tear are not covered under this warranty.
5. This warranty shall exclude requests pertaining to all refund, replacement or exchange.
6. Acorn reserves the right to charge a service fee for out of warranty repair / services of any nature and shall not be deemed liable if the conditions are not met.

Acorn Service Centre:
512 Chai Chee Lane #02-09
Singapore 469028

Operation Hours:
Mon to Fri: 9am-6pm (lunchtime 1pm-2pm)
Sat: 9am-1pm

Service Fee:
Labour Charge: \$25/unit
Delivery Charge: \$25/unit

**ESPRESSO
COFFEE MACHINE**

MODEL NO.: ST-697B

AC INPUT: 220-240V/50Hz

POWER RATING: 1450W

DO NOT IMMERSE IN WATER



MADE IN CHINA